



Worklist: 3464

<u>LAB_CASE</u>	<u>ITEM</u>	<u>TASK_ID</u>	<u>DESCRIPTION</u>
C2019-0816	1	152698	AM 28 Blood Multi-Drug Quant Panel 2 by LC-Q
C2019-0901	1	152699	AM 28 Blood Multi-Drug Quant Panel 2 by LC-Q
C2019-0985	1	154225	AM 28 Blood Multi-Drug Quant Panel 2 by LC-Q




AM# 28: Multi-Drug Quantitation in Blood by LC-MS/MS

Extraction Date: 06-10-19 Analyst: Anne Nord
Plate lot#: 190124 (part IDP-112) Plate Expiration: 7/24/19



Mobile phase A: 5mM Amm Form + 0.01% FA 0.5M Ammonium Hydroxide
Mobile phase B: 0.01% Formic Acid in MeOH Ethyl Acetate 20% Methanol in Water

Blank Blood Lot: 19A207P3

Column: Agilent 120 EC-C18 (2.1x 100-~~4um~~)  9/18/19

LCMS-QQQ ID: 69679

2.7

Pre-Analytic:

- 1. Check levels of mobile phases and needle wash refill as needed. Ensure waste is not full.
- 2. Ensure correct column is installed and begin mobile phase flow allow to equilibrate ~ 30 minutes.
- 3. Create worklist:

Analytic:

- 1. Remove standards, plate, controls, and samples from cold storage. Allow to reach room temperature.
- 2. Pipette **250µL blood (calibrated pipette) Pipette ID: 1926134** in wells of analytical (standards) plate.
- 3. Place on shaking incubator at ambient temp., 900rpm for 15 minutes. *Shaker ID: 66759*
- 4. Pipette **250µL 00.5M ammonium hydroxide** in wells of analytical plate.
- 5. Place on shaking incubator at ambient temp., 900rpm for 15 minutes.
- 6. Transfer **300µL of blood+base** mixture to corresponding wells of SLE+ plate.
- 7. Apply positive pressure for approx. 10-15 seconds (or until no liquid remains on top of sorbent).
(Load at 85-100 PSI- Selector to the right) Manifold ID: 66792
- 8. Wait 5 minutes.
- 9. Add **900uL ethyl acetate**.
- 10. Wait 5 minutes.
- 11. Apply positive pressure for approx. 15 seconds. **(10-15 PSI- Selector to the left)**.
- 12. Add **900uL ethyl acetate**.
- 13. Wait 5 minutes.
- 14. Apply positive pressure for approx. 15 seconds. **(10-15 PSI- Selector to the left)**.
- 15. Remove plate containing eluate. Place on SPE Dry and evaporate to dryness at approx. 35°C.
SPE Dry ID: 66819
- 16. Reconstitute in **100µL 20% MeOH** and heat seal plate with foil. Place in autosampler and run worklist.

Post-Analytic

- 1. Create batch and process data.
Worklist path: MassHunter|Data|2019/am 28 061019 Batch Name: mdp p2
- 2. Make necessary changes to integration limits
- 3. Integration linear and R² values ≥0.98 for each analyte.
- 4. For unknown samples and controls: response ratio within 20% of average of controls and standards, RT within +/- 5% (tramadol RT +/-2%), S/N for primary transition >10 and secondary transitions >5.
- 5. Did all QCs pass for each analyte? Yes, see comments Add Control data to QC tracking spreadsheet.
- 6. Central File Packet to include: LIMS Worklist, Method Checklist, Calibration and Control Reports.

COMMENTS:

Curves limited: Paroxetine 5-100

Compounds evaluated – amitriptyline, doxepin, meperidine, methocarbamol, nortriptyline, paroxetine, and zopiclone.



Toxicology AM method 28 panel 1 external prep information

working solution 10000 ng/ml in meoh amphetamine, dextromethorphan, methamphetamine, morphine, paroxetine, amitriptyline, meperidine, doxepine, ^{6/13/19} mirtazapine, 1000 ng/ml buprenorphine

Stock solution 1mg/ml (.1mg/ml buprenorphine) 100 ul each in 9000 ul meOH

Ppd 3/14/19 Exp: 3/14/20 lot 31420 by AMN

Drug	lot	expiration
amphetamine	FE06011503	6/1/2020
dextromethorphan	FN07231501	7/1/2020
methamphetamine	FE08101708	10/1/2022
morphine	FE08141515	11/1/2020
buprenorphine	FE09211501	9/1/2020
paroxetine	FN05111505	6/1/2020
mirtazapine	FN04201503	4/1/2020
meperidine	FE01191502	2/1/2020 (this compound will not be evaluated in this control after 2/1/2020)
doxepine ^{6/13/19}	FN01281502	2/1/2020 (this compound will not be evaluated in this control after 2/1/2020)
amitriptyline	FN07081401	9/1/2019 (this compound will not be evaluated in this control after 9/1/2019)

AM 28 control 50 ul working solution lot (31420) in 9950 ul blood lot (19A207P3)

ppd 3/14/19 Exp 3/14/2020 by AMN Concentration 50 ng/ml each (5 ng/ml buprenorphine)

AM #28 Multi-Drug Quant. Results

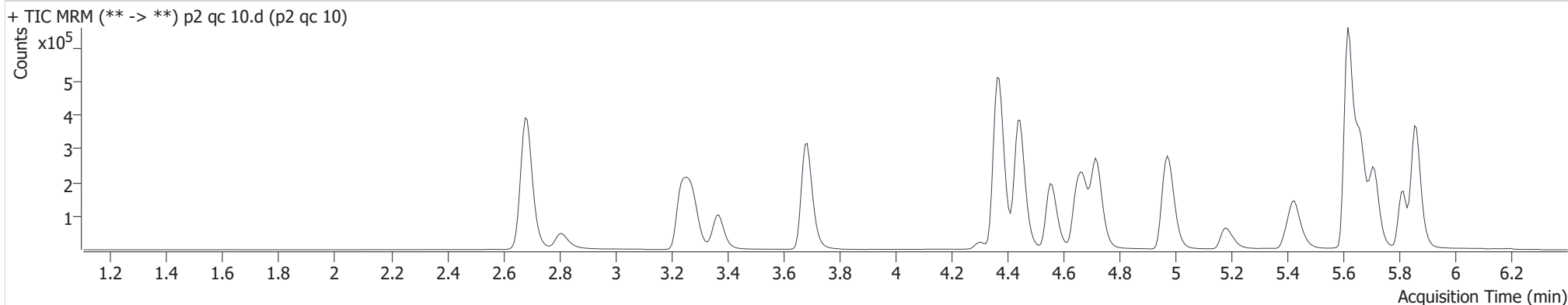
Batch results
Calibration Last Update

D:\MassHunter\Data\2019\am28 061019\QuantResults\mdq p2.batch.bin
6/11/2019 10:32:34 AM

Instrument 69679
Type QC
Acq. Method am 28 p2.m
Sample Position P2-A5
Injection Volume 2.5
Acq. Date-Time 6/10/2019 11:21:30 PM
Sample Info.

Data File p2 qc 10.d
Sample p2 qc 10
Operator Anne Nord
Comment

Sample Chromatogram



Name	RT	Resp.	S/N	Ratio	S/N	ISTD Resp.	Final Conc.
Amitriptyline	5.698	18253	37.10	99.5	448.04	76078	10.6807 ng/ml
Doxepin	5.418	30060	341.64	52.5	173.14	140488	9.9840 ng/ml
Meperidine	4.560	89430	2444.55	66.7	2225.56	401605	10.2494 ng/ml
Methocarbamol	4.473	8190	424.84	92.9	810.34	316655	10.5536 ng/ml
Nortriptyline	5.713	18219	358.64	72.0	146.48	67470	10.8905 ng/ml
Paroxetine	5.593	5563	89.08	47.6	108.50	76078	12.0945 ng/ml
Zopiclone	4.307	9297	318.96	61.9	7231.23	43382	10.2059 ng/ml

AM #28 Multi-Drug Quant. Results

Batch results

D:\MassHunter\Data\2019\am28 061019\QuantResults\mdq p2.batch.bin

Calibration Last Update

6/11/2019 10:32:34 AM

Instrument

69679

Type

QC

Acq. Method

am 28 p2.m

Sample Position

P2-B5

Injection Volume

2.5

Acq. Date-Time

6/10/2019 11:32:19 PM

Sample Info.**Data File**

p2 qc 100.d

Sample

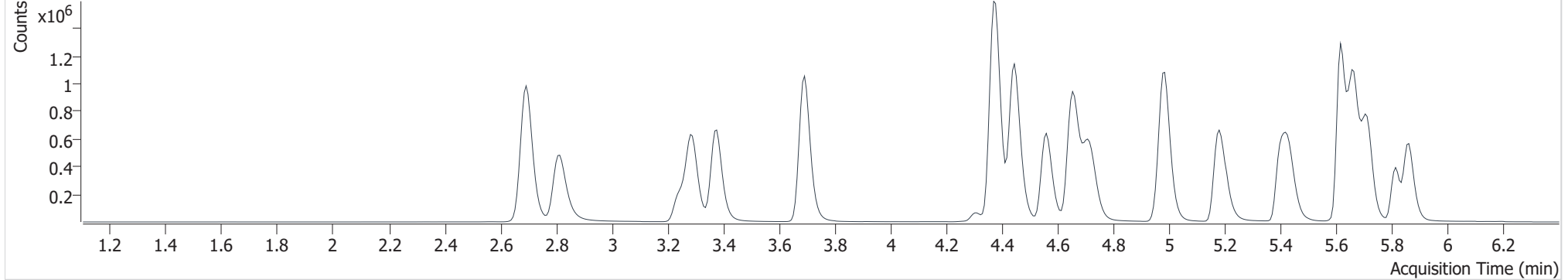
p2 qc 100

Operator

Anne Nord

Comment**Sample Chromatogram**

+ TIC MRM (** -> **) p2 qc 100.d (p2 qc 100)



Name	RT	Resp.	S/N	Ratio	S/N	ISTD Resp.	Final Conc.
Amitriptyline	5.698	155797	1829.01	106.8	1163.08	71435	101.1120 ng/ml
Doxepin	5.418	291104	7822.25	52.2	6064.25	139809	100.3701 ng/ml
Meperidine	4.560	861819	63545.60	66.4	56017.04	384301	102.2094 ng/ml
Methocarbamol	4.473	71255	5000.73	92.5	1177.68	284432	108.7145 ng/ml
Nortriptyline	5.713	142297	4662.89	74.0	6621.50	57251	99.9937 ng/ml
Paroxetine	5.593	38818	901.69	50.6	433.94	71435	110.9072 ng/ml
Zopiclone	4.307	89090	19694.74	59.9	48074.11	40987	102.6945 ng/ml

AM #28 Multi-Drug Quant. Results

Batch results

D:\MassHunter\Data\2019\am28 061019\QuantResults\mdq p2.batch.bin

Calibration Last Update

6/11/2019 10:32:34 AM

Instrument

69679

Type

QC

Acq. Method

am 28 p2.m

Sample Position

P2-C5

Injection Volume

2.5

Acq. Date-Time

6/10/2019 11:43:06 PM

Sample Info.**Data File**

p2 qc 250.d

Sample

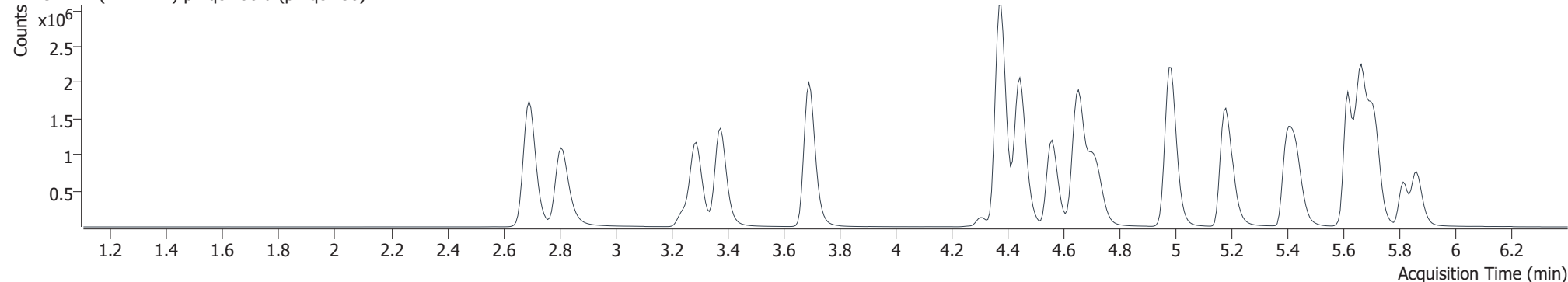
p2 qc 250

Operator

Anne Nord

Comment**Sample Chromatogram**

+ TIC MRM (** -> **) p2 qc 250.d (p2 qc 250)



Name	RT	Resp.	S/N	Ratio	S/N	ISTD Resp.	Final Conc.
Amitriptyline	5.698	453733	1338.95	106.2	3075.56	84672	249.1622 ng/ml
Doxepin	5.418	769328	10851.57	52.0	1447.96	147782	251.4976 ng/ml
Meperidine	4.560	1849818	326986.36	68.0	28336.79	333640	252.5321 ng/ml
Methocarbamol	4.473	139187	10014.93	93.7	6019.64	245508	246.9726 ng/ml
Nortriptyline	5.713	415984	9272.69	72.6	4061.38	66844	250.3206 ng/ml
Paroxetine	5.593	123420	1637.32	53.5	4108.56	84672	303.0049 ng/ml
Zopiclone	4.307	195030	67448.04	60.6	2253.38	37546	245.2887 ng/ml

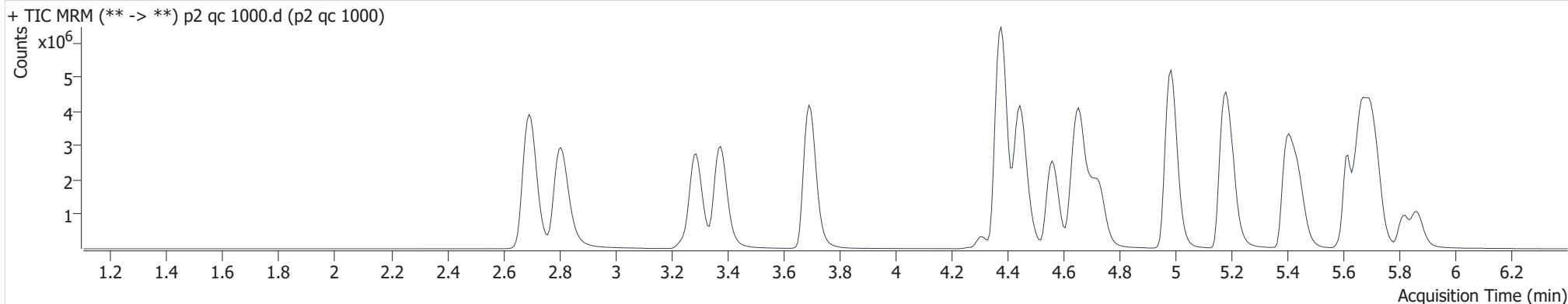
* outside curve range

AM #28 Multi-Drug Quant. Results

Batch results D:\MassHunter\Data\2019\am28 061019\QuantResults\mdq p2.batch.bin
Calibration Last Update 6/11/2019 10:32:34 AM

Instrument	69679	Data File	p2 qc 1000.d
Type	QC	Sample	p2 qc 1000
Acq. Method	am 28 p2.m	Operator	Anne Nord
Sample Position	P2-D5	Comment	
Injection Volume	2.5		
Acq. Date-Time	6/10/2019 11:53:56 PM		
Sample Info.			

Sample Chromatogram



Name	RT	Resp.	S/N	Ratio	S/N	ISTD Resp.	Final Conc.
Amitriptyline	5.692	1418316	195.41	112.4	2432.48	74151	890.6339 ng/ml
Doxepin	5.418	2585002	16013.14	52.1	57771.60	124790	1001.8470 ng/ml
Meperidine	4.560	4509653	352859.47	70.2	10272.67	202256	1015.2256 ng/ml
Methocarbamol	4.480	324899	44273.55	92.5	82455.60	164874	860.3007 ng/ml
Nortriptyline	5.720	1203137	3655.75	73.4	44537.45	46664	1036.9864 ng/ml
Paroxetine	5.593	440040	1315.39	53.0	41811.19	74151	1243.6537 ng/ml outside curve range
Zopiclone	4.307	583048	670689.27	59.8	11819.03	27439	1003.1361 ng/ml

A

AM #28 Multi-Drug Quant. Results

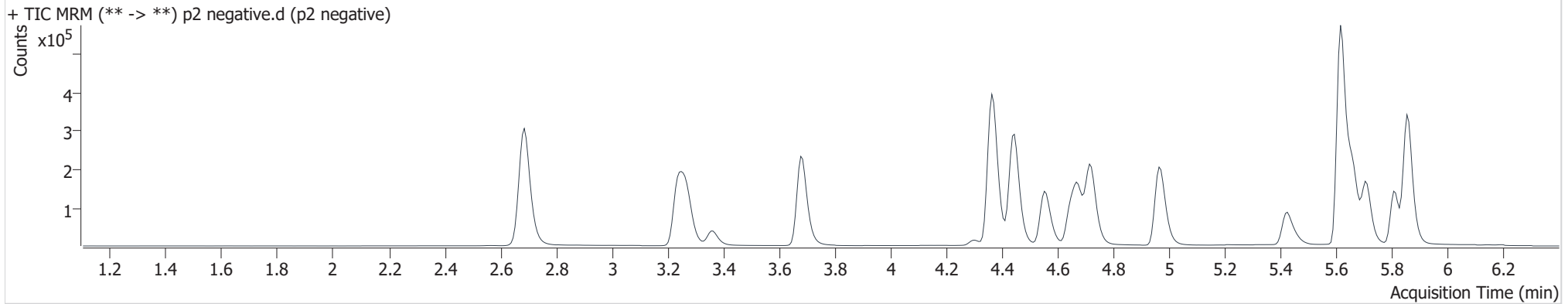


Batch results D:\MassHunter\Data\2019\am28 061019\QuantResults\mdq p2.batch.bin
Calibration Last Update 6/11/2019 10:32:34 AM

Instrument 69679
Type Sample
Acq. Method am 28 p2.m
Sample Position P2-E5
Injection Volume 2.5
Acq. Date-Time 6/11/2019 12:15:26 AM
Sample Info.

Data File p2 negative.d
Sample p2 negative
Operator Anne Nord
Comment

Sample Chromatogram



AM #28 Multi-Drug Quant. Results

Batch results

D:\MassHunter\Data\2019\am28 061019\QuantResults\mdq p2.batch.bin

Calibration Last Update

6/11/2019 10:32:34 AM

Instrument

69679

Type

Sample

Acq. Method

am 28 p2.m

Sample Position

P2-G3

Injection Volume

2.5

Acq. Date-Time

6/11/2019 1:20:08 AM

Sample Info.**Data File**

p2 external control.d

Sample

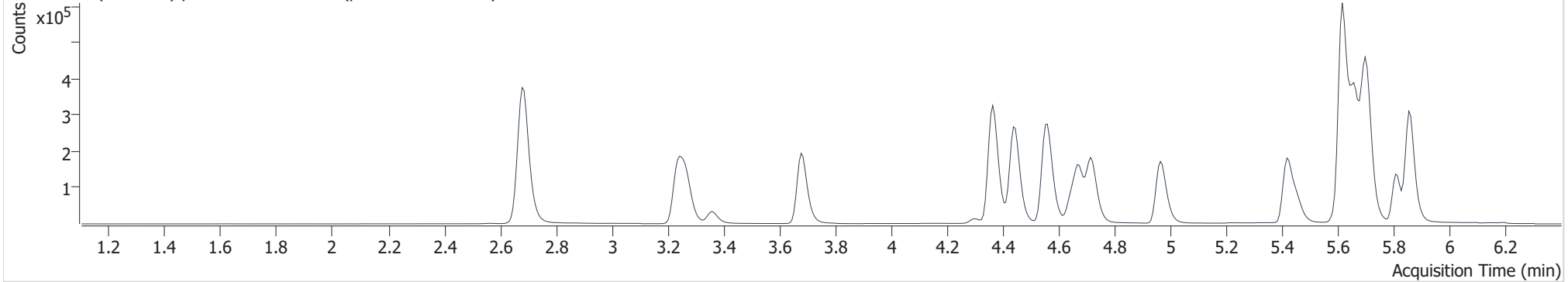
p2 external control

Operator

Anne Nord

Comment**Sample Chromatogram**

+ TIC MRM (** -> **) p2 external control.d (p2 external control)



Name	RT	Resp.	S/N	Ratio	S/N	ISTD Resp.	Final Conc.
Amitriptyline	5.698	118602	3015.17	112.1	2558.82	144878	37.6426 ng/ml
Doxepin	5.418	173794	25787.54	52.2	2327.05	187452	44.4885 ng/ml
Meperidine	4.560	282468	41026.96	67.0	3579.55	300076	42.9673 ng/ml
Paroxetine	5.593	61831	2378.16	50.5	1561.54	144878	86.4049 ng/ml

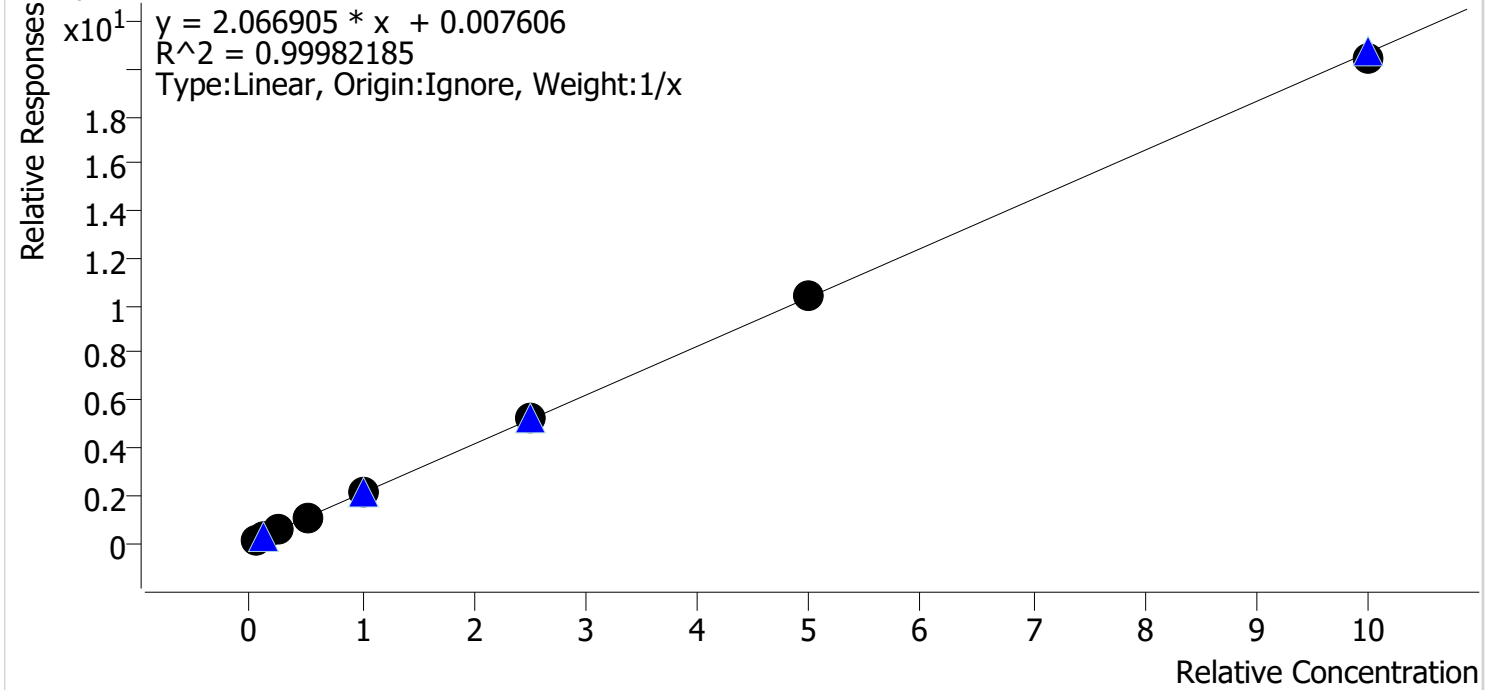
Compound Calibration Report



Batch results D:\MassHunter\Data\2019\am28 061019\QuantResults\mdq p2.batch.bin
Last Cal. Update 6/11/2019 10:32 AM
Analyst Name ISP\datastor
Analyte Doxepin

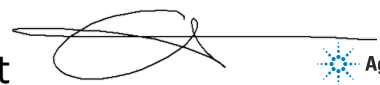
Internal Standard Doxepin-D3

Doxepin - 8 Levels, 8 Levels Used, 8 Points, 8 Points Used, 4 QCs



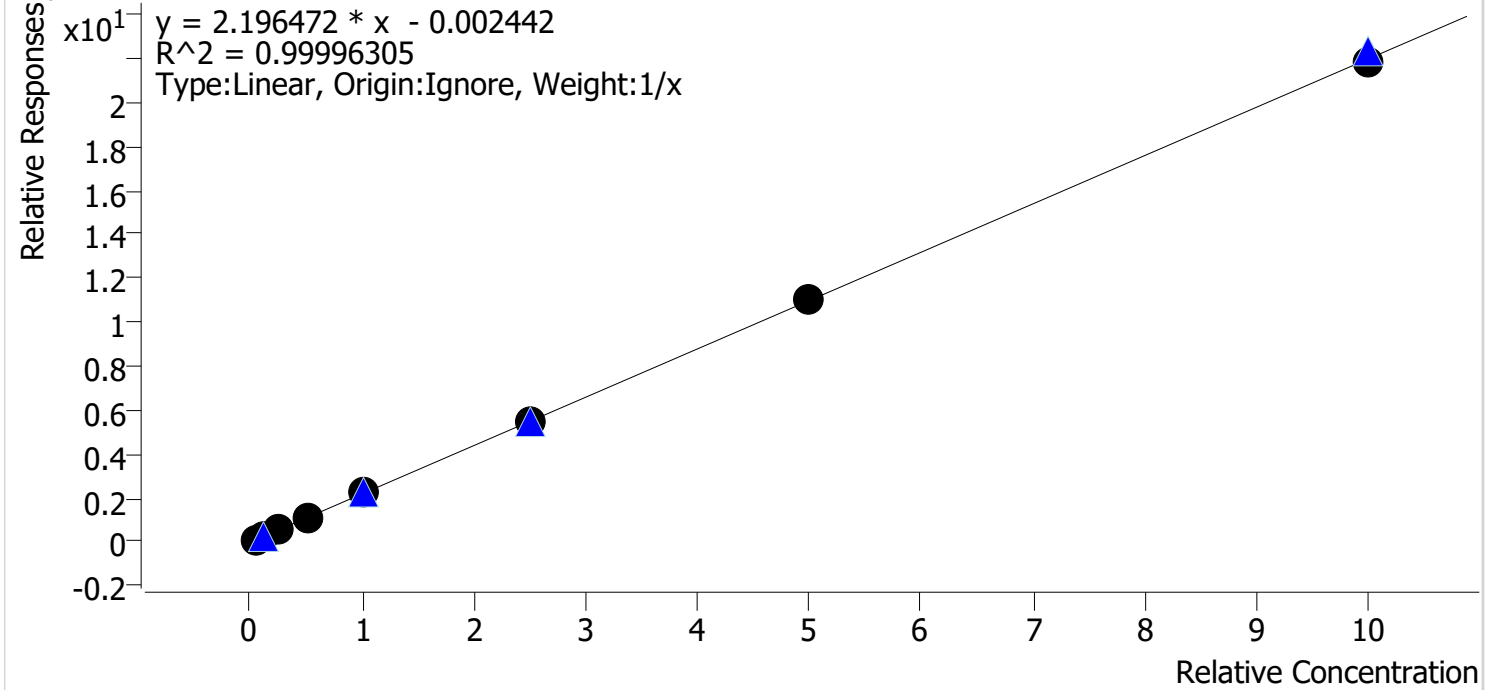
Sample	Level	Enabled	Expected Concentration	Final Concentration	Accuracy
p2 cal 1	1	✓	5.0	4.7	94.1
p2 cal 2	2	✓	10.0	9.9	99.4
p2 cal3	3	✓	25.0	25.3	101.3
p2 cal4	4	✓	50.0	51.0	102.0
p2 cal 5	5	✓	100.0	102.6	102.6
p2 cal 6	6	✓	250.0	251.4	100.6
p2 cal 7	7	✓	500.0	506.2	101.2
p2 cal 8	8	✓	1000.0	988.9	98.9

Compound Calibration Report



Batch results D:\MassHunter\Data\2019\am28 061019\QuantResults\mdq p2.batch.bin
Last Cal. Update 6/11/2019 10:32 AM
Analyst Name ISP\datastor
Analyte Meperidine **Internal Standard** Meperidine-D4

Meperidine - 8 Levels, 8 Levels Used, 8 Points, 8 Points Used, 4 QCs

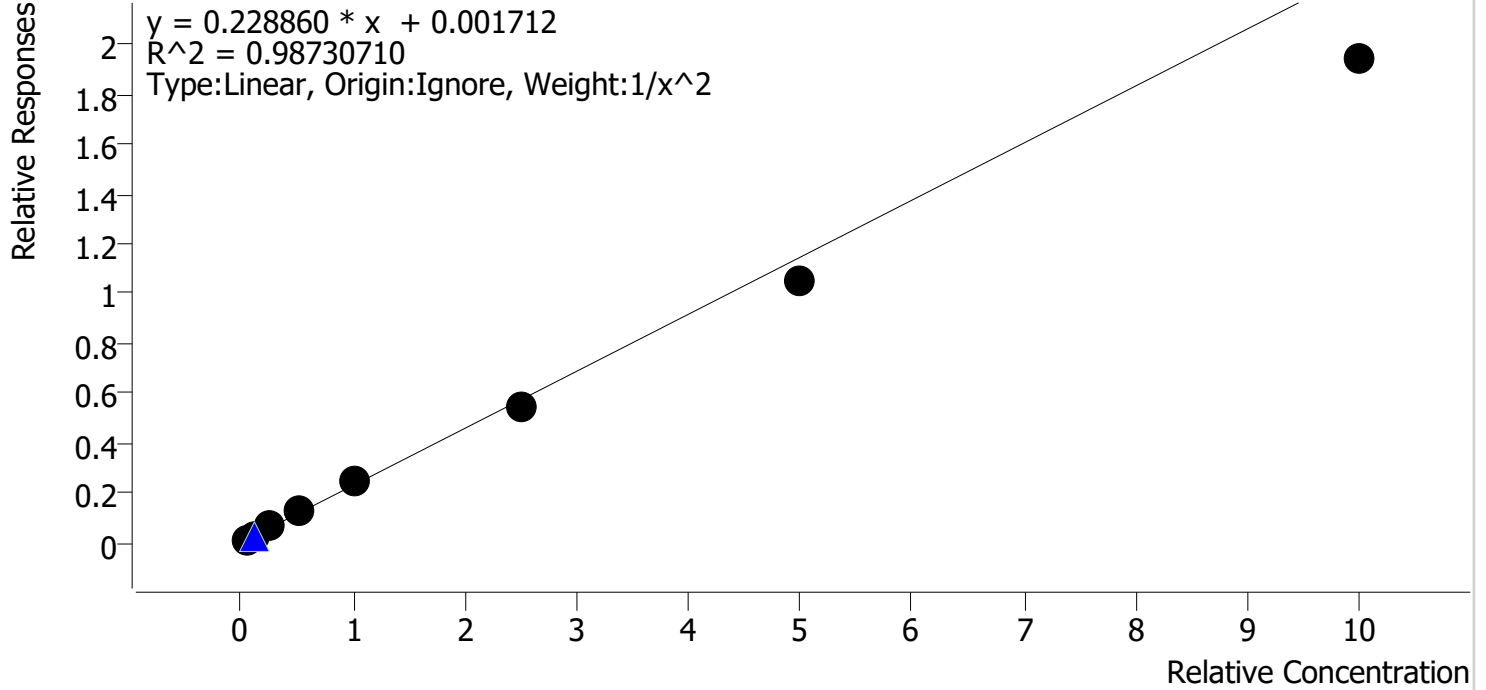


Sample	Level	Enabled	Expected Concentration	Final Concentration	Accuracy
p2 cal 1	1	✓	5.0	5.1	101.2
p2 cal 2	2	✓	10.0	10.1	100.8
p2 cal3	3	✓	25.0	24.4	97.6
p2 cal4	4	✓	50.0	49.6	99.3
p2 cal 5	5	✓	100.0	100.6	100.6
p2 cal 6	6	✓	250.0	250.3	100.1
p2 cal 7	7	✓	500.0	503.7	100.7
p2 cal 8	8	✓	1000.0	996.2	99.6

Compound Calibration Report

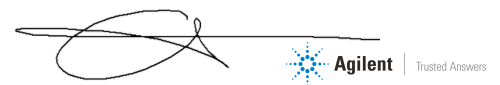
Batch results D:\MassHunter\Data\2019\am28 061019\QuantResults\mdq p2.batch.bin
Last Cal. Update 6/11/2019 10:32 AM
Analyst Name ISP\datastor
Analyte Methocarbamol **Internal Standard** MDA-D5

Methocarbamol - 8 Levels, 8 Levels Used, 8 Points, 8 Points Used, 4 QCs



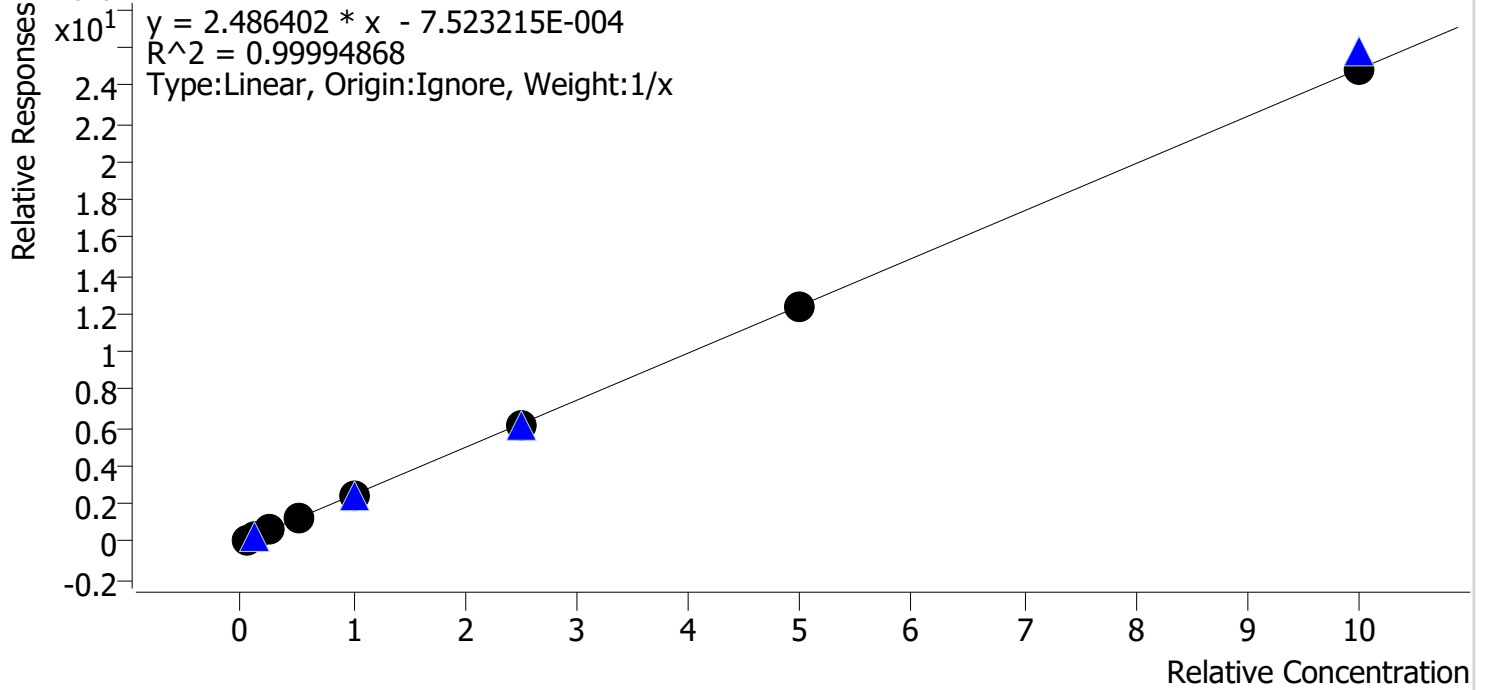
Sample	Level	Enabled	Expected Concentration	Final Concentration	Accuracy
p2 cal 1	1	✓	5.0	4.7	94.3
p2 cal 2	2	✓	10.0	10.6	105.9
p2 cal3	3	✓	25.0	26.8	107.1
p2 cal4	4	✓	50.0	55.5	111.1
p2 cal 5	5	✓	100.0	110.3	110.3
p2 cal 6	6	✓	250.0	238.0	95.2
p2 cal 7	7	✓	500.0	458.4	91.7
p2 cal 8	8	✓	1000.0	845.2	84.5

Compound Calibration Report



Batch results D:\MassHunter\Data\2019\am28 061019\QuantResults\mdq p2.batch.bin
Last Cal. Update 6/11/2019 10:32 AM
Analyst Name ISP\datastor
Analyte Nortriptyline **Internal Standard** Nortriptyline-d3

Nortriptyline - 8 Levels, 8 Levels Used, 8 Points, 8 Points Used, 4 QCs



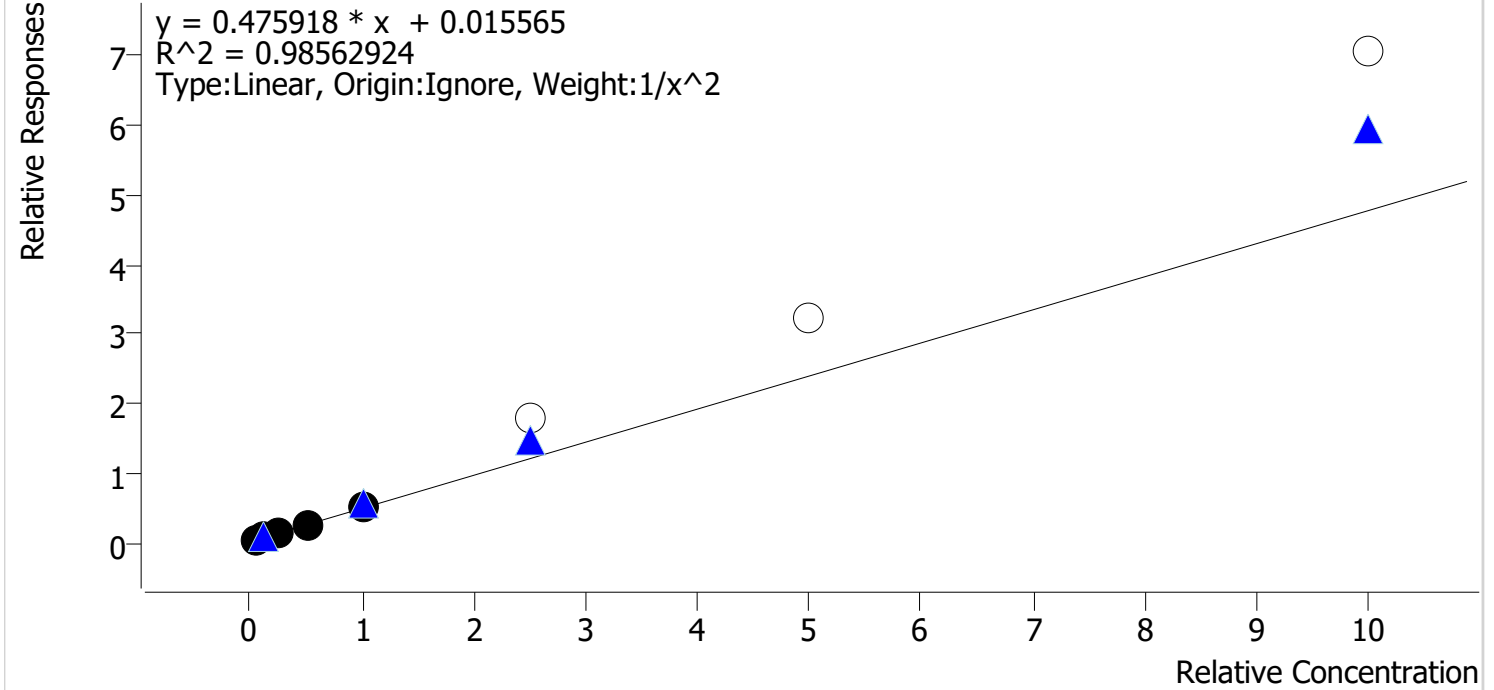
Sample	Level	Enabled	Expected Concentration	Final Concentration	Accuracy
p2 cal 1	1	✓	5.0	5.2	103.1
p2 cal 2	2	✓	10.0	10.2	102.2
p2 cal3	3	✓	25.0	24.4	97.7
p2 cal4	4	✓	50.0	48.3	96.5
p2 cal 5	5	✓	100.0	100.3	100.3
p2 cal 6	6	✓	250.0	250.1	100.0
p2 cal 7	7	✓	500.0	499.4	99.9
p2 cal 8	8	✓	1000.0	1002.2	100.2

Compound Calibration Report



Batch results D:\MassHunter\Data\2019\am28 061019\QuantResults\mdq p2.batch.bin
Last Cal. Update 6/11/2019 10:32 AM
Analyst Name ISP\datastor
Analyte Paroxetine **Internal Standard** Amitriptyline-D3

Paroxetine - 8 Levels, 5 Levels Used, 8 Points, 5 Points Used, 4 QCs



Sample	Level	Enabled	Expected Concentration	Final Concentration	Accuracy
p2 cal 1	1	✓	5.0	5.1	101.1
p2 cal 2	2	✓	10.0	9.6	95.8
p2 cal3	3	✓	25.0	27.5	110.2
p2 cal4	4	✓	50.0	43.2	86.5
p2 cal 5	5	✓	100.0	106.4	106.4
p2 cal 6	6	✗	250.0	372.8	149.1
p2 cal 7	7	✗	500.0	677.5	135.5
p2 cal 8	8	✗	1000.0	1480.9	148.1

AM #28 Multi-Drug Quant. Results

Batch results
Calibration Last Update

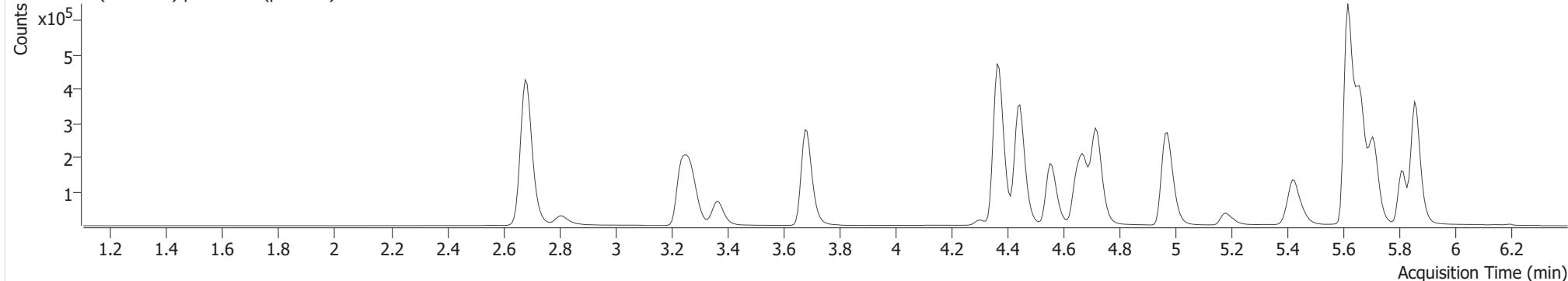
D:\MassHunter\Data\2019\am28 061019\QuantResults\mdq p2.batch.bin
6/11/2019 10:32:34 AM

Instrument 69679
Type Cal
Acq. Method am 28 p2.m
Sample Position P2-A4
Injection Volume 2.5
Acq. Date-Time 6/10/2019 9:55:08 PM
Sample Info.

Data File p2 cal 1.d
Sample p2 cal 1
Operator Anne Nord
Comment

Sample Chromatogram

+ TIC MRM (** -> **) p2 cal 1.d (p2 cal 1)



Name	RT	Resp.	S/N	Ratio	S/N	ISTD Resp.	Final Conc.
Amitriptyline	5.692	13956	441.90	99.3	284.47	118862	4.9731 ng/ml
Doxepin	5.418	19833	1764.53	52.1	185.18	189131	4.7055 ng/ml
Meperidine	4.560	45477	470.64	67.7	8424.96	418173	5.0624 ng/ml
Methocarbamol	4.473	4112	67.44	95.7	47.14	328964	4.7143 ng/ml
Nortriptyline	5.713	14246	1017.71	71.0	277.52	111762	5.1570 ng/ml
Paroxetine	5.586	4709	155.70	47.7	1595.79	118862	5.0543 ng/ml
Zopiclone	4.301	3812	173.75	60.5	3953.84	35685	5.1332 ng/ml

AM #28 Multi-Drug Quant. Results

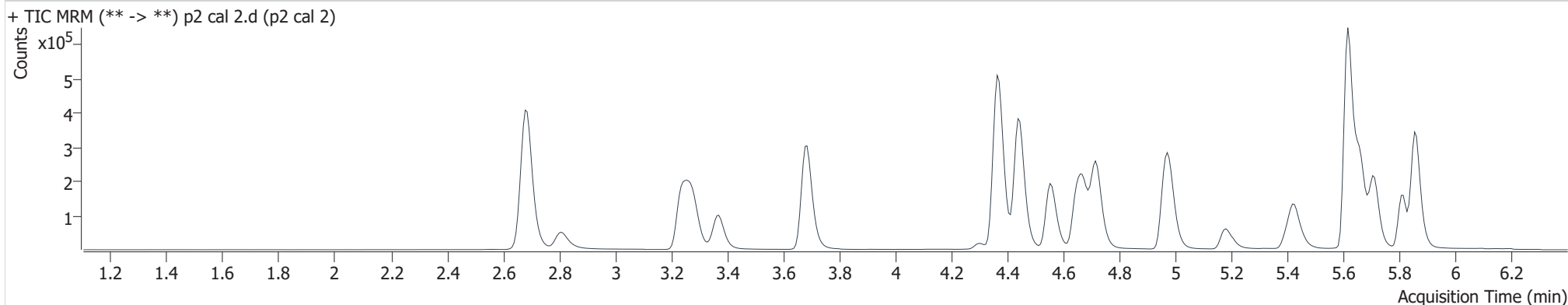
Batch results
Calibration Last Update

D:\MassHunter\Data\2019\am28 061019\QuantResults\mdq p2.batch.bin
6/11/2019 10:32:34 AM

Instrument 69679
Type Cal
Acq. Method am 28 p2.m
Sample Position P2-B4
Injection Volume 2.5
Acq. Date-Time 6/10/2019 10:05:55 PM
Sample Info.

Data File p2 cal 2.d
Sample p2 cal 2
Operator Anne Nord
Comment

Sample Chromatogram



Name	RT	Resp.	S/N	Ratio	S/N	ISTD Resp.	Final Conc.
Amitriptyline	5.698	13779	40.28	99.0	443.01	61529	9.9360 ng/ml
Doxepin	5.418	25645	1216.58	51.0	114.29	120408	9.9364 ng/ml
Meperidine	4.560	84479	2550.02	67.6	1840.69	385849	10.0791 ng/ml
Methocarbamol	4.473	7907	876.63	96.4	568.46	304841	10.5863 ng/ml
Nortriptyline	5.713	12398	6638.85	72.4	233.85	48911	10.2248 ng/ml
Paroxetine	5.593	3763	259.56	42.4	1793.41	61529	9.5815 ng/ml
Zopiclone	4.301	7494	11542.56	61.8	545.85	35899	9.9441 ng/ml

AM #28 Multi-Drug Quant. Results

Batch results
Calibration Last Update

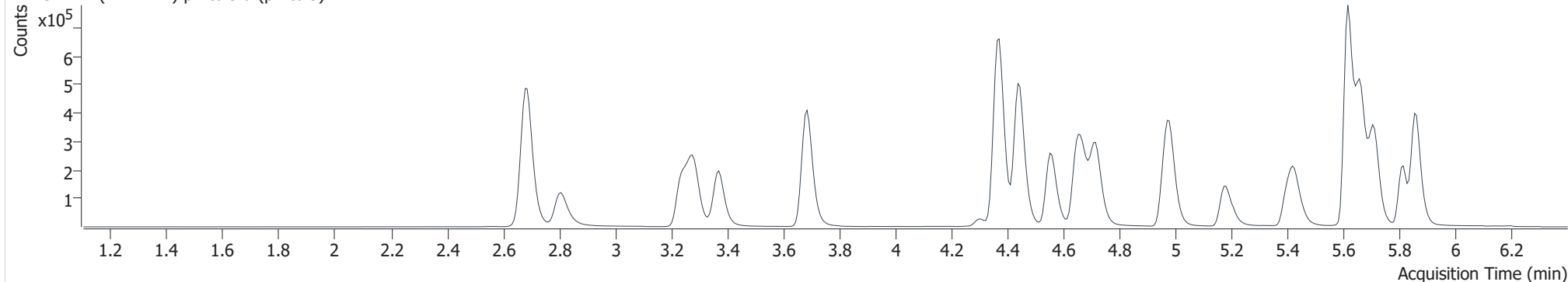
D:\MassHunter\Data\2019\am28 061019\QuantResults\mdq p2.batch.bin
6/11/2019 10:32:34 AM

Instrument 69679
Type Cal
Acq. Method am 28 p2.m
Sample Position P2-C4
Injection Volume 2.5
Acq. Date-Time 6/10/2019 10:16:43 PM
Sample Info.

Data File p2 cal3.d
Sample p2 cal3
Operator Anne Nord
Comment

Sample Chromatogram

+ TIC MRM (** -> **) p2 cal3.d (p2 cal3)



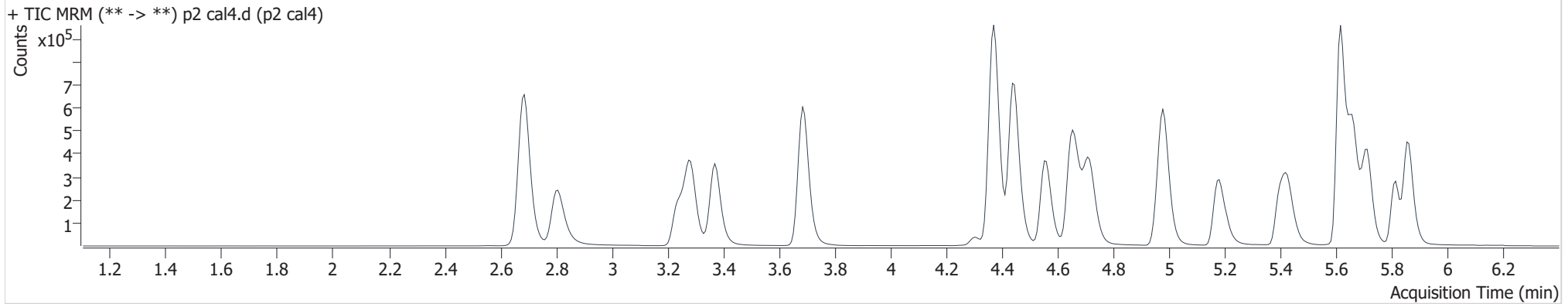
Name	RT	Resp.	S/N	Ratio	S/N	ISTD Resp.	Final Conc.
Amitriptyline	5.692	46196	167.19	102.9	402.29	82546	25.5763 ng/ml
Doxepin	5.418	74072	3697.16	51.0	645.07	139530	25.3161 ng/ml
Meperidine	4.560	201883	2696.10	66.2	12254.69	378475	24.3961 ng/ml
Methocarbamol	4.473	18799	755.99	93.4	1476.31	298511	26.7691 ng/ml
Nortriptyline	5.713	43630	80792.85	70.8	772.13	71952	24.4179 ng/ml
Paroxetine	5.593	12105	869.34	46.9	11452.91	82546	27.5435 ng/ml
Zopiclone	4.301	20763	47686.26	59.8	4659.29	40358	24.3759 ng/ml

AM #28 Multi-Drug Quant. Results

Batch results D:\MassHunter\Data\2019\am28 061019\QuantResults\mdq p2.batch.bin
Calibration Last Update 6/11/2019 10:32:34 AM

Instrument	69679	Data File	p2 cal4.d
Type	Cal	Sample	p2 cal4
Acq. Method	am 28 p2.m	Operator	Anne Nord
Sample Position	P2-D4	Comment	
Injection Volume	2.5		
Acq. Date-Time	6/10/2019 10:27:30 PM		
Sample Info.			

Sample Chromatogram



Name	RT	Resp.	S/N	Ratio	S/N	ISTD Resp.	Final Conc.
Amitriptyline	5.692	58616	1805.95	102.4	1542.17	53442	50.6029 ng/ml
Doxepin	5.418	122071	2923.73	51.4	924.94	114974	50.9997 ng/ml
Meperidine	4.560	400321	8793.92	66.5	7749.94	368004	49.6369 ng/ml
Methocarbamol	4.473	36836	5656.59	93.1	1754.89	285949	55.5398 ng/ml
Nortriptyline	5.713	45754	45296.19	71.7	734.09	38155	48.2587 ng/ml
Paroxetine	5.593	11832	503.90	52.2	6727.28	53442	43.2478 ng/ml
Zopiclone	4.301	39462	849.28	61.0	2833.40	37797	49.3744 ng/ml

AM #28 Multi-Drug Quant. Results

Batch results
Calibration Last Update

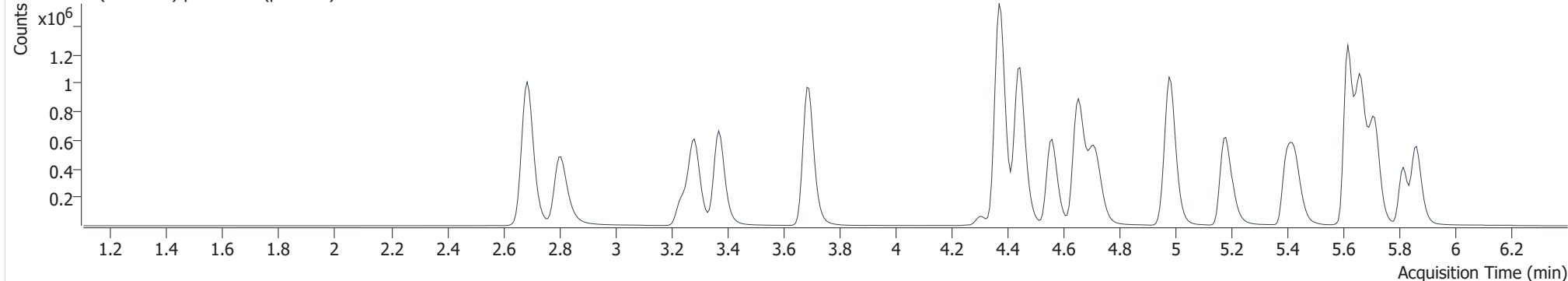
D:\MassHunter\Data\2019\am28 061019\QuantResults\mdq p2.batch.bin
6/11/2019 10:32:34 AM

Instrument 69679
Type Cal
Acq. Method am 28 p2.m
Sample Position P2-E4
Injection Volume 2.5
Acq. Date-Time 6/10/2019 10:38:17 PM
Sample Info.

Data File p2 cal 5.d
Sample p2 cal 5
Operator Anne Nord
Comment

Sample Chromatogram

+ TIC MRM (** -> **) p2 cal 5.d (p2 cal 5)



Name	RT	Resp.	S/N	Ratio	S/N	ISTD Resp.	Final Conc.
Amitriptyline	5.692	152926	3464.29	101.2	1738.75	66513	106.6212 ng/ml
Doxepin	5.418	280986	11249.76	51.7	6451.06	132064	102.5712 ng/ml
Meperidine	4.560	793668	175236.82	67.1	105291.94	359504	100.6213 ng/ml
Methocarbamol	4.473	68183	2606.12	93.6	4324.28	268279	110.3028 ng/ml
Nortriptyline	5.713	128868	3093.72	73.4	1371.06	51689	100.3013 ng/ml
Paroxetine	5.593	34725	483.56	52.2	17695.49	66513	106.4286 ng/ml
Zopiclone	4.301	85088	46755.78	59.8	50556.63	39149	102.6859 ng/ml

AM #28 Multi-Drug Quant. Results

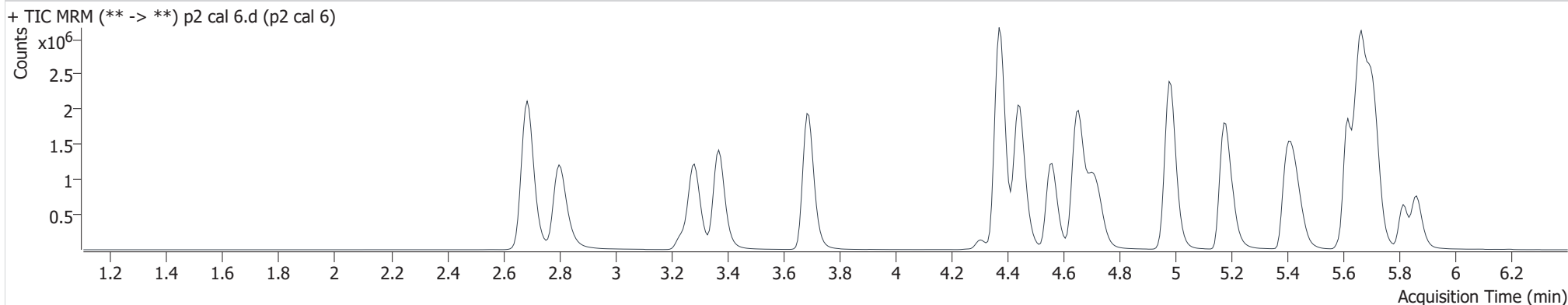
Batch results
Calibration Last Update

D:\MassHunter\Data\2019\am28 061019\QuantResults\mdq p2.batch.bin
6/11/2019 10:32:34 AM

Instrument 69679
Type Cal
Acq. Method am 28 p2.m
Sample Position P2-F4
Injection Volume 2.5
Acq. Date-Time 6/10/2019 10:49:05 PM
Sample Info.

Data File p2 cal 6.d
Sample p2 cal 6
Operator Anne Nord
Comment

Sample Chromatogram



Name	RT	Resp.	S/N	Ratio	S/N	ISTD Resp.	Final Conc.
Amitriptyline	5.692	778737	307.65	105.2	3977.18	144804	250.0546 ng/ml
Doxepin	5.418	1172641	11674.74	52.0	4336.03	225324	251.4205 ng/ml
Meperidine	4.560	1896654	172764.28	67.2	25381.65	345146	250.2951 ng/ml
Methocarbamol	4.473	139567	5499.31	94.0	183927.71	255460	237.9731 ng/ml
Nortriptyline	5.713	739971	101755.10	72.7	4222.10	119020	250.0785 ng/ml
Paroxetine	5.593	259169	1100.33	52.0	227001.59	144804	372.7992 ng/ml
Zopiclone	4.301	205333	7124.03	61.9	152897.91	39154	247.6415 ng/ml

AM #28 Multi-Drug Quant. Results

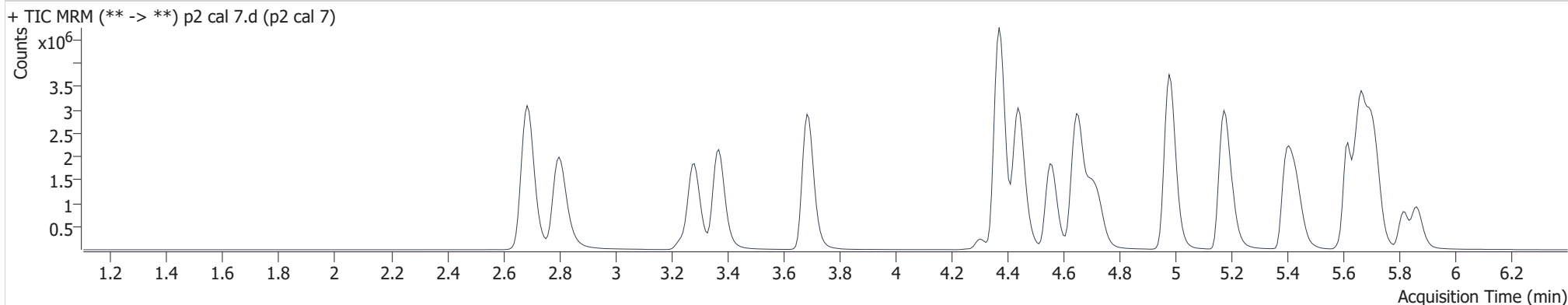
Batch results
Calibration Last Update

D:\MassHunter\Data\2019\am28 061019\QuantResults\mdq p2.batch.bin
6/11/2019 10:32:34 AM

Instrument 69679
Type Cal
Acq. Method am 28 p2.m
Sample Position P2-G4
Injection Volume 2.5
Acq. Date-Time 6/10/2019 10:59:54 PM
Sample Info.

Data File p2 cal 7.d
Sample p2 cal 7
Operator Anne Nord
Comment

Sample Chromatogram



Name	RT	Resp.	S/N	Ratio	S/N	ISTD Resp.	Final Conc.
Amitriptyline	5.692	914425	69.20	106.3	2645.96	87035	488.9906 ng/ml
Doxepin	5.418	1549683	93432.11	52.2	24336.36	148018	506.1643 ng/ml
Meperidine	4.553	3058733	595682.69	68.6	5858.78	276508	503.7368 ng/ml
Methocarbamol	4.473	217962	6809.15	91.9	6015.17	207425	458.3960 ng/ml
Nortriptyline	5.713	797534	48076.92	71.9	16586.01	64239	499.3501 ng/ml
Paroxetine	5.593	282000	1992.72	53.4	6630.19	87035	677.5338 ng/ml
Zopiclone	4.301	359745	5095.65	59.2	78329.38	34095	498.1619 ng/ml

AM #28 Multi-Drug Quant. Results

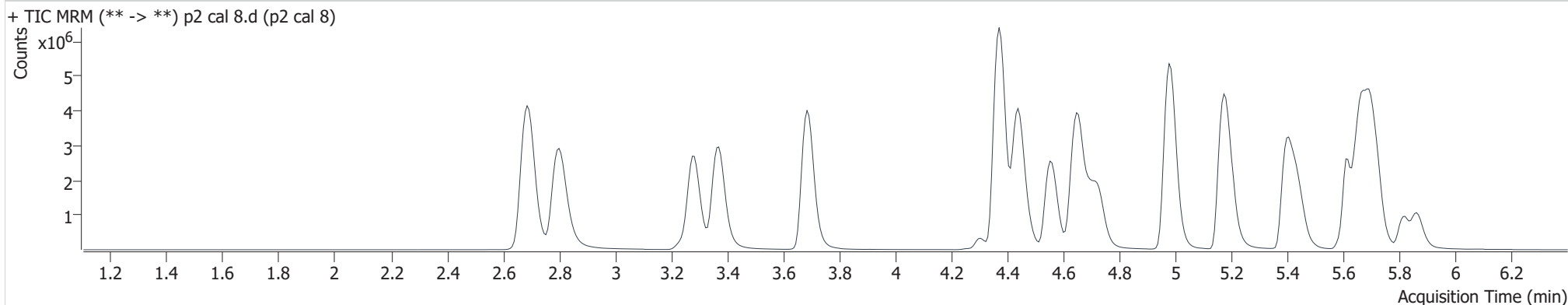
Batch results
Calibration Last Update

D:\MassHunter\Data\2019\am28 061019\QuantResults\mdq p2.batch.bin
6/11/2019 10:32:34 AM

Instrument 69679
Type Cal
Acq. Method am 28 p2.m
Sample Position P2-H4
Injection Volume 2.5
Acq. Date-Time 6/10/2019 11:10:42 PM
Sample Info.

Data File p2 cal 8.d
Sample p2 cal 8
Operator Anne Nord
Comment

Sample Chromatogram



Name	RT	Resp.	S/N	Ratio	S/N	ISTD Resp.	Final Conc.
Amitriptyline	5.692	1564450	86862.20	110.0	3727.78	78142	932.2504 ng/ml
Doxepin	5.418	2808732	89226.07	51.9	8147.12	137367	988.8862 ng/ml
Meperidine	4.553	4547337	4446.19	71.0	4222.22	207848	996.1724 ng/ml
Methocarbamol	4.473	310587	33494.29	93.2	21158.85	160418	845.2288 ng/ml
Nortriptyline	5.713	1338939	8960.34	72.7	14842.83	53733	1002.2117 ng/ml
Paroxetine	5.593	551944	1157.77	52.5	5253.79	78142	1480.8736 ng/ml
Zopiclone	4.301	536451	199444.42	59.3	1976.18	25257	1002.6832 ng/ml